



01-Mar-22

BEES AT WORK EPISODE 16

The meaningful work
means happiness too

By Eleonora Escalante Strategy

Eleonora Escalante Strategy. All rights reserved. Copyright 2016-2022

1





BEES AT WORK

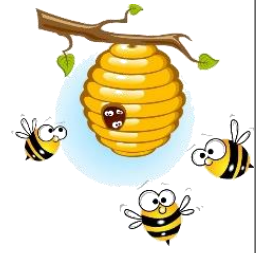
Saga Outline

1. **Introduction** 🌻
2. **Rationale, Philosophy and objectives of the saga** 🌻
3. **Before starting** 🌻
4. **The life of the bees at the hive** 🌻
5. **Why are bees crucial for human civilization?** 🌻
6. **Bees Swarm Intelligence** 🌻
7. **How Bees colonies make decisions** 🌻
8. **Bees living in a time of chaos** 🌻
9. **Honeybees' democracy by Thomas Seeley** 🌻
10. **The wisdom of bees applied to human societies** 🌻
11. **Homo sapiens history of work – Our past** 🌻
12. **How humans work now – Our present** 🌻
13. **The forthcoming of work – Our future?** 🌻
14. **How people dignify time by working** 🌻
15. **The meaningful work means happiness too.** 🌻 **TODAY**
16. **Women in the workplace**
17. **What has changed at work with the NAIQIs?**
18. **An appraisal to workforce and employment trends after the COVID19 Pandemic**
19. **Working for knowledge vs Working for Manufacturing**
20. **The workplace as a school: The new Learning organization**
21. **Skills of the halted workforce and consequences**
22. **Why the virtual office is not for all, but for some.**
23. **Figuring out a hybrid working model**
24. **Why are employees quitting?**
25. **Living to work? or working to live?**
26. **Research agenda in terms of work for the next 10 years: Elements of a new state-of-the-art “working paradigm”**
27. **Summary and conclusions**

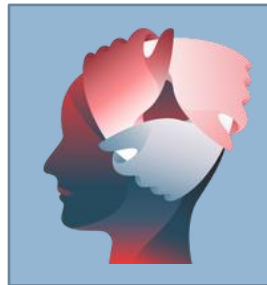


BEEES AT WORK

01-Mar-22



A meaningful work means happiness when the job description fits with the purpose of joy for each employee. Every person is different. Look at what Bain says about this.



Operator

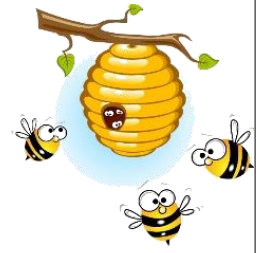
For Operators, life is about more than work. They see work as a means to an end. They don't feel a burning desire to always stand out, which makes them excellent team players. At their best, they form the dependable backbone of the organization. At their worst, they are disengaged and lack proactivity.



Giver

For Givers, work is about service. They feel rewarded by seeing their actions make a positive impact in someone else's life. They bring a human touch to their organizations. At their best, they are selfless. At their worst, they may be impractical or naive.

For more details: <https://www.bain.com/insights/what-type-of-worker-are-you-future-of-work-report-interactive/>



BEES AT WORK

A meaningful work means happiness when the job description fits with the reason of joy for each employee. Every person is different. Look at what Bain says about this.

Artisan



Artisans are motivated by the pursuit of mastery in their craft. They're always on the lookout for ways to perfect their skills—for them, learning is a lifelong journey. They raise the bar for performance at their organizations. At their best, they are able to solve complex challenges. At their worst, they can be aloof and lose sight of bigger objectives

Explorer



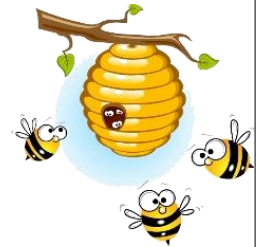
For Explorers, life is an adventure. They want excitement and variety from work. They help make their organizations more adaptable in a rapidly changing world. At their best, they will enthusiastically throw themselves at whatever task is required of them. At their worst, they are directionless and lack conviction.

For more details: <https://www.bain.com/insights/what-type-of-worker-are-you-future-of-work-report-interactive/>



BEES AT WORK

01-Mar-22



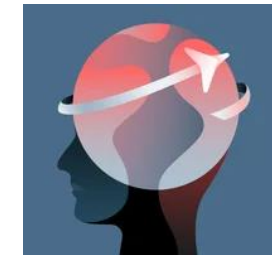
A meaningful work means happiness when the job description fits with the reason of joy for each employee. Every person is different. Look at what Bain says about this.

Striver



Strivers are driven by a powerful desire to make something of their lives. They set high standards for themselves and can be quite competitive. They keep organizations running successfully. At their best, they are disciplined and transparent. At their worst, their competitiveness degrades trust and camaraderie within the organization.

Pioneer



Pioneers are on a mission to change the world. They tend to form strong views about the way things should be and seek opportunities to turn their visions into reality. At their best, they mobilize their infectious energy to bring about lasting change. At their worst, they are uncompromising and imperious.

For more details: <https://www.bain.com/insights/what-type-of-worker-are-you-future-of-work-report-interactive/>